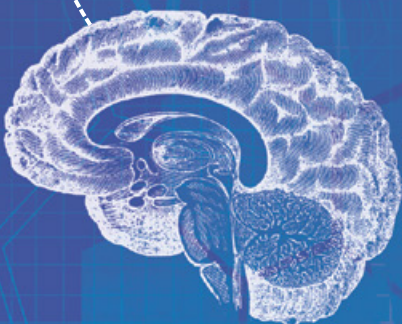


**THE AMYGDALA AND THE STETHOSCOPE:
HOW EMOTIONS AFFECT THE PRACTICE OF MEDICINE**



A Lecture by
DANIELLE OFRI

Monday, September 22, 2014, 11:30 a.m.
Mayer Auditorium, Health Sciences Campus
University of Southern California

USC Visions & Voices
The Arts and Humanities Initiative

THE AMYGDALA AND THE STETHOSCOPE: HOW EMOTIONS AFFECT THE PRACTICE OF MEDICINE

A Lecture by
DANIELLE OFRI

Monday, September 22, 2014, 11:30 a.m.
Mayer Auditorium, Health Sciences Campus
Book signing and reception to follow.
Admission is free. Reservations requested.
RSVP at visionsandvoices.usc.edu

Are medical professionals always able to put sentiment aside when making important decisions for their patients? Essayist and physician Danielle Ofri, author of *What Doctors Feel: How Emotions Affect the Practice of Medicine*, will explore how emotions permeate clinical decisions and provoke physicians to act in ways that are not nearly as rational and evidence-based as they may think. Don't miss this compelling installment of the Medical Humanities, Arts and Ethics Series, which engages core health issues in society today.

Presented by USC Visions and Voices: The Arts and Humanities Initiative. Organized by Pamela Schaff (Pediatrics and Family Medicine), Lyn Boyd-Judson (Levan Institute for Humanities and Ethics) and Alexander Capron (Law and Medicine). Co-sponsored by the Keck School of Medicine's Program in Medical Humanities, Arts, and Ethics, the USC Pacific Center for Health Policy and Ethics and the USC Levan Institute for Humanities and Ethics.

For more information, please visit our website or contact us at visionsandvoices@usc.edu or 213.740.0483.



USC Visions & Voices
The Arts and Humanities Initiative



**USC University of
Southern California**

visionsandvoices.usc.edu | University of Southern California